

Configuration of As 400 to print to a Canon IR / RIP

Ping the IP address of the Image Runner

At the console type

Ping "ip_address" (Don't forget the quotes)

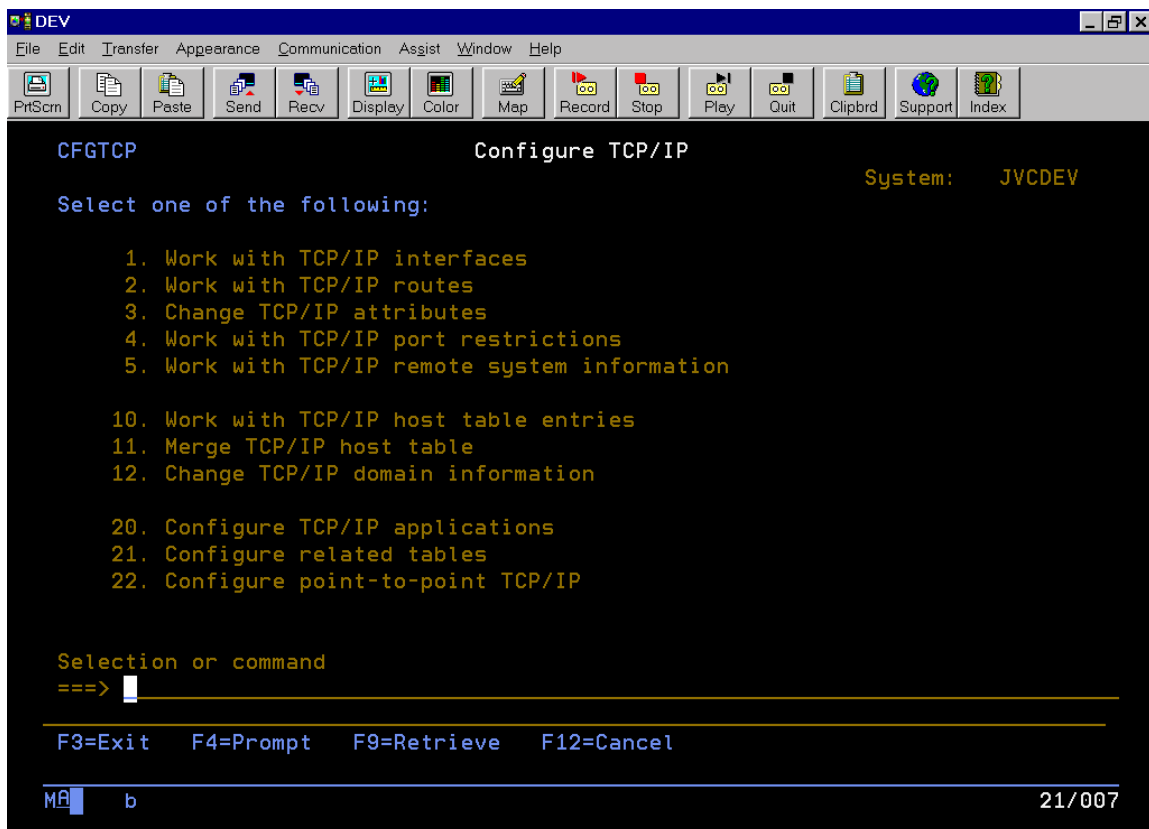
Make sure HOSTPRINT Services are running. This transforms SCS into ASCII

Edit the Host file – to do this you need to Log in with the Security Officer Password. At the Console shown below at the Prompt type

CFGTCIP

Select option 10

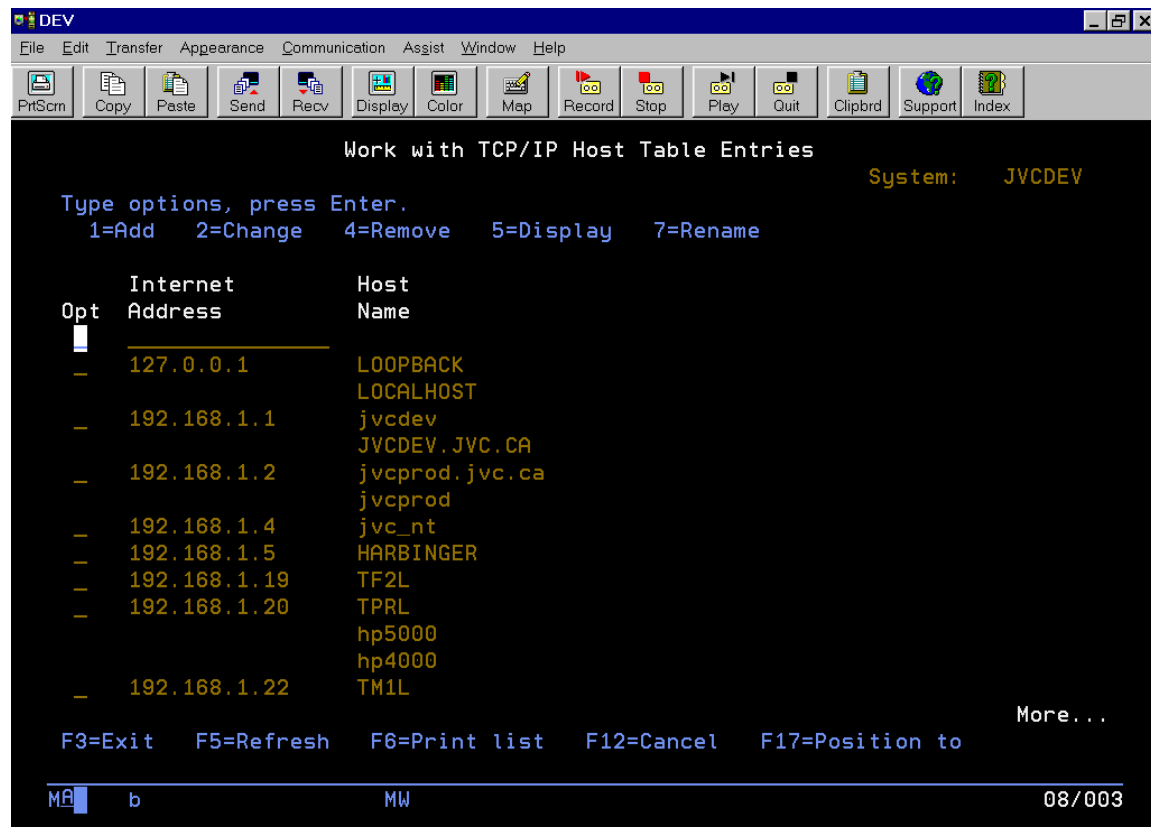
Work with TCP/IP host table entries

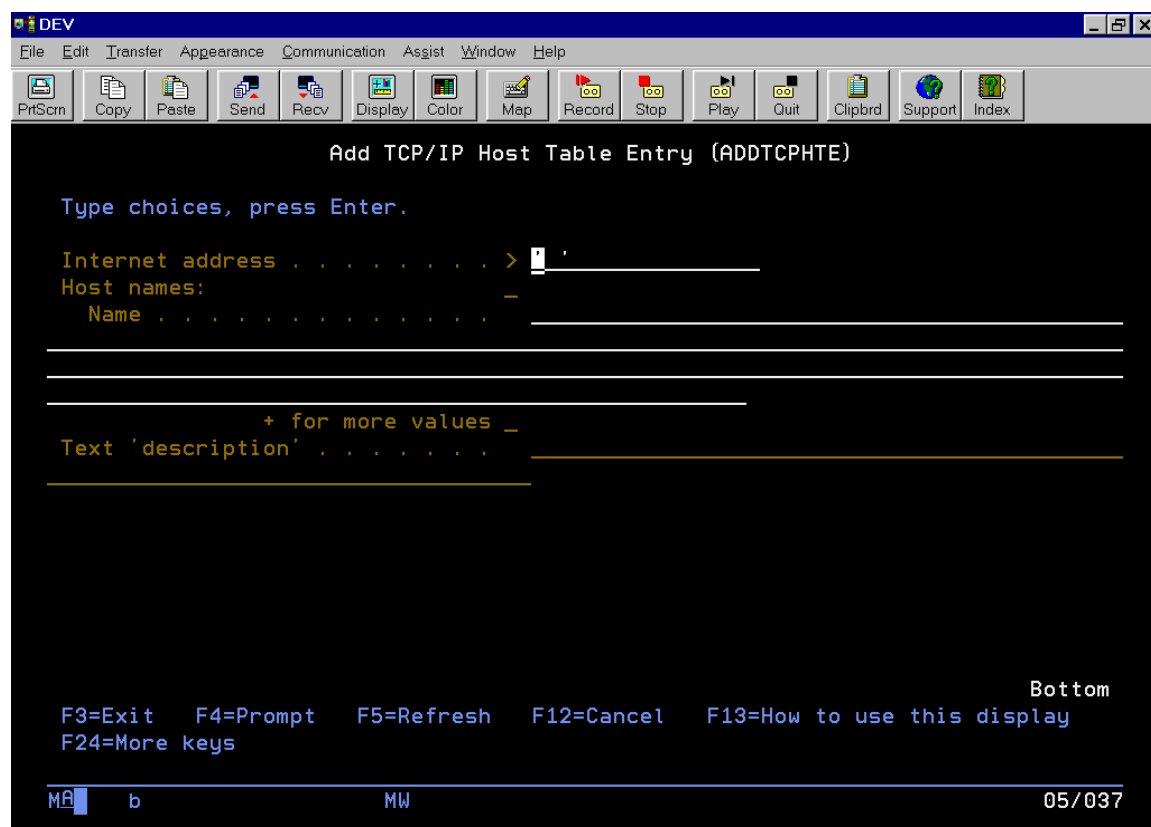


At the Console shown below select option 2

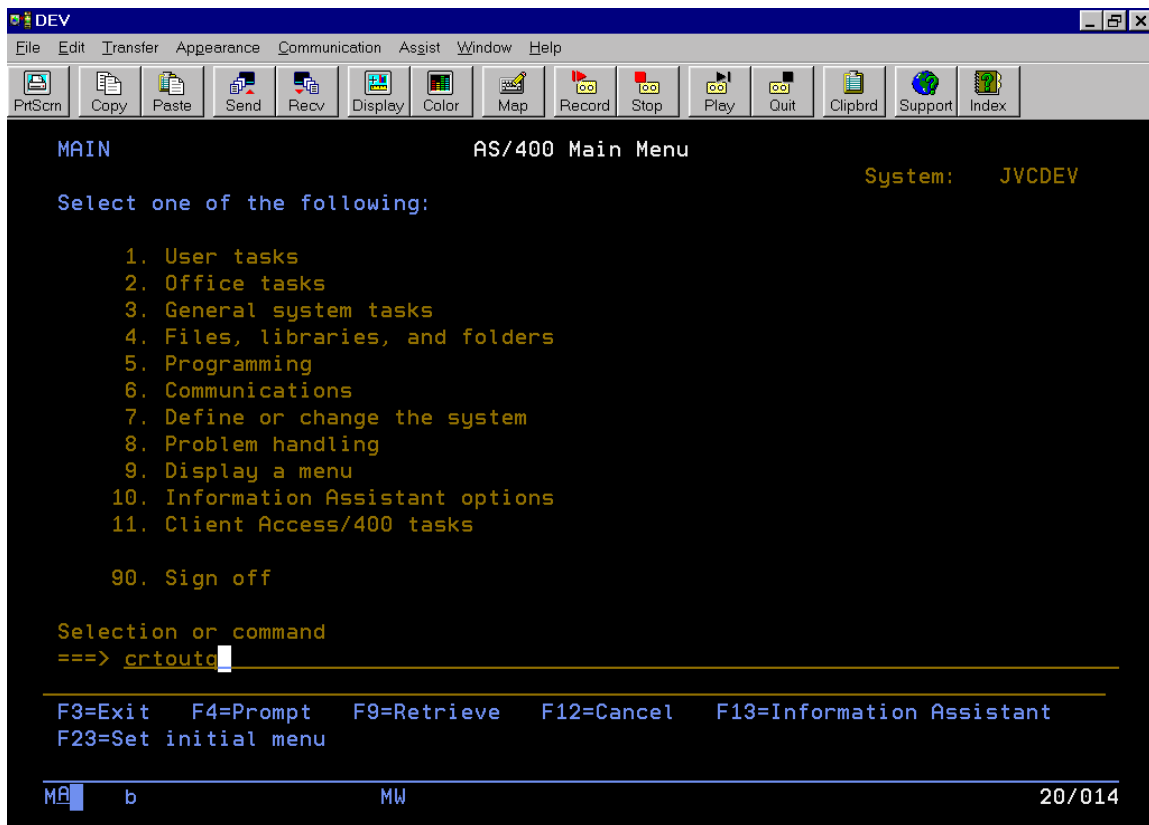
Change

This will enable you to Add or Change the host table entries.





4. At the console shown above type the IP Address and Host name from the host file
Save the settings and exit to the main console.



1. At the main console type

CRTOUTQ (Press F4 Key this will prompt you for info)

This will create an out queue.

2. At the console shown below complete the info as indicated below.

Output queue > My Printer (This name is an alias and can be anything)

Library> SPOOL (This is the name of the spool directory)

Remote System> Host_Name (This is the entry in the hosts file)

Press F10 for additional parameters

Remote Printer Queue> print (Make sure print is within quotation marks "print")

DEV

File Edit Transfer Appearance Communication Assist Window Help

PrtScr Copy Paste Send Recv Display Color Map Record Stop Play Quit Clipbrd Support Index

Create Output Queue (CRTOUTQ)

Type choices, press Enter.

Output queue	> TEST	Name
Library	> QGPL	Name, *CURLIB
Maximum spooled file size:		
Number of pages	*NONE	Number, *NONE
Starting time		Time
Ending time		Time
+ for more values _		
Order of files on queue	*FIFO	*FIFO, *JOBNBR
Remote system	> TEST	
Remote printer queue > ANY		

More...

F3=Exit F4=Prompt F5=Refresh F12=Cancel F13=How to use this display
F24=More keys

MA b MW 05/037

Use Page Down for Next Screen

DEV

File Edit Transfer Appearance Communication Assist Window Help

PrtScr Copy Paste Send Recv Display Color Map Record Stop Play Quit Clipbrd Support Index

Create Output Queue (CRTOUTQ)

Type choices, press Enter.

Writers to autostart	> 1	1-10, *NONE
Queue for writer messages . . .	QSYSOPR	Name
Library	*LIBL	Name, *LIBL, *CURLIB
Connection type	*IP	*SNA, *IP, *IPX, *USRDFN
Destination type	*OTHER	*OS400, *OS400V2, *PSF2...
Host print transform	*YES	*YES, *NO
Manufacturer type and model . .	*IBM42011	
Workstation customizing object	*NONE	Name, *NONE
Library		Name, *LIBL, *CURLIB
Image configuration	*NONE	*NONE, *IMGA01, *IMGA02...
Destination options	*NONE	
Print separator page *YES *YES, *NO		
User defined option	*NONE	Option, *NONE
+ for more values _		

More...

F3=Exit F4=Prompt F5=Refresh F12=Cancel F13=How to use this display
F24=More keys

MA b MW 05/037

Change the following Settings for the Screen above

Writers to Autostart = 1 (Need to change)

Connection Type = IP (Need to change)

Host Print Transformation = Yes (Make sure)

Destination Type = Other (Make sure)

Press Enter Key

Move cursor to

Manufacturers Model high light and Press F4

Select *HP5

Print Separator Page = No

DEV

File Edit Transfer Appearance Communication Assist Window Help

PrintScreen Copy Paste Send Recv Display Color Map Record Stop Play Quit Clipboard Support Index

Create Output Queue (CRTOUTQ)

Type choices, press Enter.

Writers to autostart	> 1	1-10, *NONE
Queue for writer messages . . .	QSYSOPR	Name
Library	*LIBL	Name, *LIBL, *CURLIB
Connection type	*IP	*SNA, *IP, *IPX, *USRDFN
Destination type	*OTHER	*OS400, *OS400V2, *PSF2...
Host print transform	*YES	*YES, *NO
Manufacturer type and model . .	*HP5	
Workstation customizing object	*NONE	Name, *NONE
Library		Name, *LIBL, *CURLIB
Image configuration	*NONE	*NONE, *IMGA01, *IMGA02...
Destination options	*NONE	

Print separator page	> *no	*YES, *NO
User defined option	*NONE	Option, *NONE
+ for more values		

More...

F3=Exit F4=Prompt F5=Refresh F12=Cancel F13=How to use this display
F24=More keys

MA b MW 19/037

Page Down to the console screen below and check the options are set up as shown below.

DEV

File Edit Transfer Appearance Communication Assist Window Help

PrintScreen Copy Paste Send Recv Display Color Map Record Stop Play Quit Clipboard Support Index

Create Output Queue (CRTOUTQ)

Type choices, press Enter.

User defined object:

Object	*NONE	Name, *NONE
Library		Name, *LIBL, *CURLIB
Object type		*DTAARA, *DTAQ, *FILE...
User driver program	*NONE	Name, *NONE
Library		Name, *LIBL, *CURLIB
Spooled file ASP	*SYSTEM	*SYSTEM, *OUTQASP
Text 'description'	*BLANK	

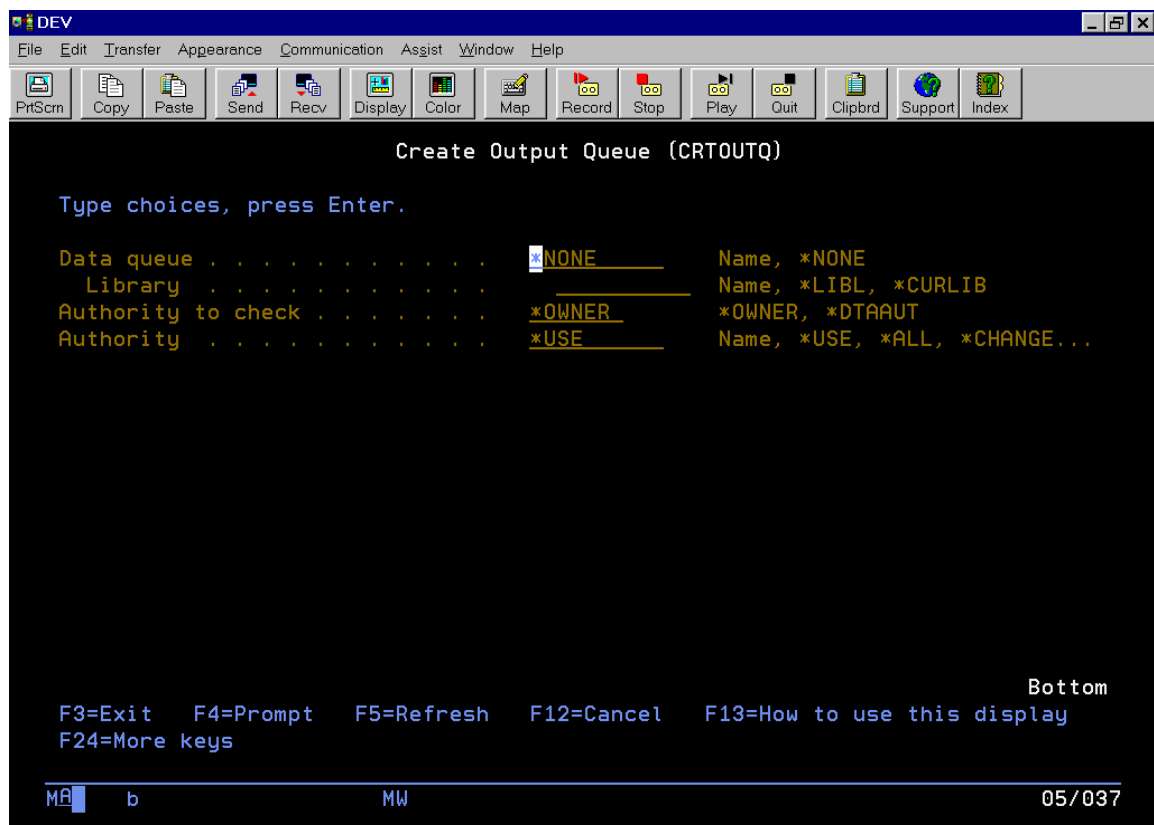
Additional Parameters

Display any file	*NO	*NO, *YES, *OWNER
Job separators	0	0-9, *MSG
Operator controlled	*YES	*YES, *NO

More...

F3=Exit F4=Prompt F5=Refresh F12=Cancel F13=How to use this display
F24=More keys

MA b MW 06/037



To Display all queues configured on the system

WRKOUT

PRD

File Edit Transfer Appearance Communication Assist Window Help

PrtScr Copy Paste Send Recv Display Color Map Record Stop Play Quit Clipbrd Support Index

Work with Output Queue

Queue: PRT01 Library: QUSRSYS Status: RLS

Type options, press Enter.

1=Send 2=Change 3=Hold 4=Delete 5=Display 6=Release 7=Messages
8=Attributes 9=Work with printing status

Opt	File	User	User Data	Sts	Pages	Copies	Form Type	Pty
—	QSYSPT	TALATR		RDY	1	1	*STD	5
—	QSYSPT	TALATR		RDY	1	1	*STD	5
—	QPRINT	SAP03		OPN	0	1	*STD	5
—	QPRINT	SAP03		OPN	0	1	*STD	5

Bottom

Parameters for options 1, 2, 3 or command
==> WORKOUTQ OUTQ(QGPL/TCAN) OUTPUT(*PRINT)

F3=Exit F11=View 2 F12=Cancel F20=Writers F22=Printers
F24=More keys

MA a MW 21/007

PRD

File Edit Transfer Appearance Communication Assist Window Help

PrtScr Copy Paste Send Recv Display Color Map Record Stop Play Quit Clipbrd Support Index

Work with All Output Queues

Type options, press Enter.

2=Change 3=Hold 4=Delete 5=Work with 6=Release 8=Description
9=Work with Writers 14=Clear

Opt	Queue	Library	Files	Writer	Status
—	JUNK	QGPL	0		RLS
—	MF1L	QGPL	12	MF1L	HLD
—	MW1D	QGPL	0	MW1D	RLS
—	MW1L	QGPL	0	MW1L	RLS
—	MW2D	QGPL	0	MW2D	RLS
—	QDKT	QGPL	0		RLS
—	QPFROUTQ	QGPL	3		RLS
—	QPRINT	QGPL	2		RLS
—	QPRINTS	QGPL	0		RLS
—	QPRINT2	QGPL	0		RLS
—	R160	QGPL	0	R160	RLS
—	R161	QGPL	0	R161	RLS

More...

Command
==> _____

F3=Exit F4=Prompt F5=Refresh F12=Cancel F24=More keys

MA a MW 10/002

To change Printer configuration

CHGPRTF

Highlight the option that needs to be changed and press F4

PRD

File Edit Transfer Appearance Communication Assist Window Help

PrtScr Copy Paste Send Recv Display Color Map Record Stop Play Quit Clipbrd Support Index

Change Printer File (CHGPRTF)

Type choices, press Enter.

File	> <u>TICAN</u>	Name, generic*, *ALL
Library	> <u>QGPL</u>	Name, *LIBL, *ALL, *ALLUSR...
Device:		
Printer	<u>*SAME</u>	Name, *SAME, *JOB, *SYSVAL
Printer device type	<u>*SAME</u>	*SAME, *SCS, *IPDS, *LINE...
Page size:		
Length--lines per page	<u>*SAME</u>	.001-255.000, *SAME
Width--positions per line	<u>*SAME</u>	.001-378.000, *SAME
Measurement method	<u>*SAME</u>	*SAME, *ROWCOL, *UOM
Lines per inch	<u>*SAME</u>	*SAME, 6, 3, 4, 7.5, 7.5...
Characters per inch	<u>*SAME</u>	*SAME, 10, 5, 12, 13.3, 13...
Overflow line number	<u>*SAME</u>	1-255, *SAME
Record format level check	<u>*SAME</u>	*SAME, *YES, *NO
Text 'description'	<u>*SAME</u>	

Bottom

F3=Exit F4=Prompt F5=Refresh F10=Additional parameters F12=Cancel
F13=How to use this display F24=More keys
Current values could not be retrieved.

MA a MW 05/037